



UBIFRANCE is the French Agency for International Business Development, which promotes French technologies, products, services and know how abroad. The Agency offers French companies a full range of products and services designed to support them in their efforts to penetrate foreign markets.

Renaud Zurfluh, Clusters and Partners Division
+33 4 96 17 26 14 Renaud.ZURFLUH@ubifrance.fr

Gaetan Gachet, Director IT Industry, San Francisco
+1 415 568 4573 gaetan.gachet@ubifrance.fr



AEPI GRENoble-France is an economic development agency, which provides complimentary information, introductions and services to assist companies in exploring business opportunities in the Grenoble-Isère area of France, Europe's stellar center for research in micro/nanotech.

Sharon Reh binder, Director, AEPI North America
Office: 310-473-2818 - cell: 310-880-5968
sharon@france.com - www.grenoble-isere.com/eng

Learn today. Design tomorrow.



Silicon Valley • May 2 - 5, 2011
McEnergy Convention Center • San Jose
BOOTH 2102



MINALOGIC
Ingrid MATTIONI
3 PRV LOUIS NEEL
38000 GRENoble
ingrid.mattioni@minalogic.com



CEA-Leti
Hugues METRAS
17 RUE DES MARTYRS
38000 GRENoble
hughes.metras@cea.fr



COMMON TECHNICAL BASELINE
Bruno BOUYSSOUNOUSE
c/o Floralis
6 ALL DE BETHLEEM
38610 GIERES
bruno.bouyssounouse@imag.fr



MOVEA
Yanis CARITU
4 AVE DU DOYEN LOUIS WEIL
38000 GRENoble
ycaritu@movea.com



GRENoble ALPES INNOVATION INCUBATION
Departement GRAVIT
Alexandre DELORME
46 AV FELIX VIALLET
38031 GRENoble
delorme@gravit-innovation.org



ARVENI
Jean-Frédéric MARTIN
ZI LES TRIBOULIERES
38460 CREMIEU
jfredmartin@arveni.fr



IPDIA
Laurent DUBOS
2 RUE DE LA GIRAFE
14000 CAEN
laurent.dubos@ipdia.com

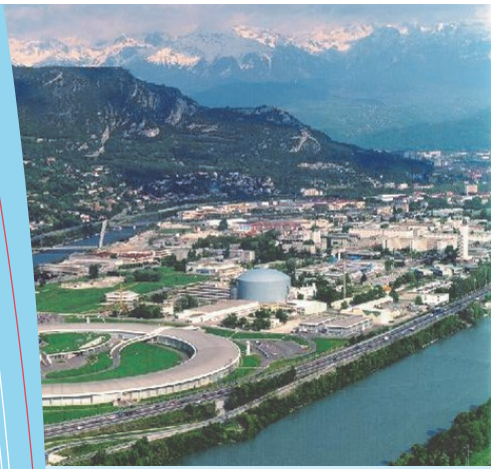


RAISONANCE
Steve GUSSENHOVEN
17 AV JEAN KUNTZMANN
38330 MONTBONNOT ST MARTIN
steve.gussenhoven@raisonance.com



Europe's research center
in micro and nanotech
& embedded systems





MINALOGIC KEY FIGURES

- 142 COMPANIES (81% SMES)
- 15 RESEARCH CENTERS AND UNIVERSITIES
- 15 LOCAL GOVERNMENTS
- 14 ECONOMIC DEVELOPMENT ORGANIZATIONS
- 3 PRIVATE INVESTORS
- 155 FINANCED PROJECTS
- €535.3 MILLION FUNDING
- €1.7 BILLION R&D BUDGET



Boost your capacity for innovation

FROM KNOWLEDGE CREATION TO TECHNOLOGY TRANSFER

Global competitive cluster MINALOGIC fosters research-led innovation in intelligent miniaturized products and solutions for industry. Located in Grenoble, France, the cluster channels in a single physical location a range of highly-specialized skills and resources from knowledge creation to the development and production of intelligent services for industry. Minalogic has staked out a position as global leader in unique hybrid of micro- and nano-technologies and embedded software, from fundamental research to technology transfer.

At the ESC exhibition booth 2102, learn about the French researches in the field of Embedded Systems, through the various industrial developments of the Competitive Cluster Minalogic members. Establish and reinforce your innovation and R&D relationships with Minalogic members and take the opportunity to join their specific competences and know-how on common research projects. The role of Minalogic is to respond to the business community's need to identify new value-added services that can be integrated into existing products in all business sectors.

An unrivalled innovation ecosystem

DEVELOP SOLUTIONS, HIGHLY DIFFERENTIATED BY THEIR LEVEL OF MINIATURIZATION, EMBEDDED INTELLIGENCE AND CONNECTIVITY

CEA-LETI : a world-class research center

CEA is a French government funded technological research organization. The CEA-Leti is focused on micro and nano technologies and their applications, from wireless devices and systems, to biology and healthcare or photonics. Nanoelectronics and Micro-systems (MEMS) are at the core of its silicon activities. With 1,200 employees, CEA-LETI trains more than 150 Ph.D. students and hosts 200 assignees from partner companies.

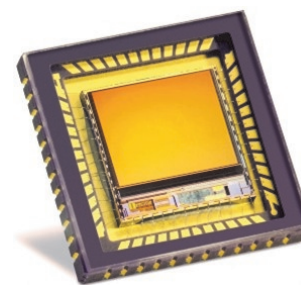
Researchers perform work for both internal clients and outside customers, including Nokia, STMicroelectronics, NEC, Atmel, Sofradir, Ulis, MicroOLED, Sagem, Trixell, Siemens Medical Systems, Kalray, Delphi, and Airbus.

GRAVIT INNOVATION : technology accelerator

Gravit is an innovation accelerator, forging solid links between research and the market. Its work starts with laboratory research teams, detecting projects with a high innovation potential of interest to a broad range of industries (environment, healthcare, energy, etc.). Its mission continues with the technical and economic maturing of research to turn it into transfer-ready projects tailored to market demands.

COMMON TECHNICAL BASELINE for embedded systems

The aim for this Common Technical Baseline is to become a common language shared by the stakeholders (systems, software and service providers, system integrators, and public authorities).



- Worldwide reference for Embedded Systems concepts, new (deployed) technologies
- Vector for further information and contacts
- Constantly updated by leading experts in the Embedded Systems Community
- Moderated, Didactic

<http://embedded-systems-portal.com/CTB/>

The end result is industrial-grade demonstrators with new ventures geared up to capitalize on this achievement.

Launched in 2006, Gravit-Innovation is backed by CEA, the Grenoble teaching hospital (CHUG), CNRS, ESRF, Grenoble INP, ILL, INRIA, Université Joseph Fourier, Université de Savoie and Université Pierre Mendès France.



ARVENI's core business is harvesting energy. The need for local, long lasting power source is strong for wireless applications. ARVENI designs, produces and sells microgenerators. ARVENI is focused on B2B. The overall performance of ARVENI's microgenerators is today the best worldwide, and their design is patented. ARVENI's aim is to become the worldwide leader of this niche market, and to be recognized by its customer as the problem-solver company. ARVENI expands its business along four mainstreams:

- * **Team:** motivated, highly skilled & flat decision making
- * **Sales:** reliable & long run customer relationship building
- * **Cash:** always balance investments and free-cash-flow needs
- * **R&D:** develop core technology, protect it, and offer customers a panel solutions



The creation of IPDiA is the result of more than 10 years of Research and Development carried out in large international groups - Philips & NXP - which led to the invention of innovative 3D technologies to integrate Passive Devices. With the support of new investors, the IPDiA team created this independent company to serve new markets, following a completely new strategy designed to win new business as well as retain existing customers.

IPDiA's primary objective is to focus on two main axes : Integrated Devices for high brightness LEDs and Integrated Passive Devices for new markets such as medical, industrial, aerospace and defense. IPDiA's technological lead in components for lighting, LEDs and integrated passive devices makes the company a major player on the world market.



Raisonance is a leading manufacturer and supplier of tools for the microelectronics industry, serving customers that include leading component manufacturers, professional engineers and electronic hobbyists around the world. Thanks to extensive technical expertise in both hardware and software design, Raisonance provides complete, cost-effective tool solutions for coding, compiling and debugging applications for a wide range of microcontroller core technologies from 8-bit STM8 and 8051, to ARM Cortex-M3, PowerPC and other 32-bit architectures. Tools support a wide range of manufacturers such as Atmel, Analog Devices, NXP, Silicon Laboratories, STMicroelectronics and Texas Instruments to name a few.